

GLEN WILLIAMS PARK - PARK PAVILION

FEEDBACK SUMMARY

Spring 2019 consultation identified the following themes and interests for the development of a final design;

Park usage comments;

- + Passive recreation (walking, playground, picnics);
- + Baseball;
- + Canada Day events.

Pavilion design and layout comments;

- + Provide protection from shade, wind, rain;
- + Retain existing location;
- + Equal size to existing structure, at a minimum;
- + Provide lighting, power and water;
- + Ensure accessibility;
- + Maximize flexibility and functionality;
- + Minimize opportunities for vandalism;
- + Respond to heritage of Glen Williams and the Park;
- + Include preparation, serving and concession area;
- + Improve or integrate Park washrooms.

Halton Region comments;

- + Servicing connections to Regional infrastructure for water and sanitary may be possible but at a significant cost.

Credit Valley Conservation (CVC) comments;

- + Portions of the park are owned by CVC and leased to the Town;
- + The park is located wholly within the floodplain of the Credit River.
- + No new permanent enclosed structures (solid walls), that would impede flood water flow.

DESIGN FEATURES

Based on the consultation outcomes, the Town has made the following design decisions to refine the layout and features to be included as part of the new pavilion, including;

- + Located behind the baseball backstop to maximize usage from baseball and Canada Day events;
- + Concrete pad below pavilion, providing a clean, accessible surface;
- + Pavilion lighting and power receptacles;
- + Seasonal water tap;
- + Formalize limestone screening pathway between parking lot and pavilion;
- + Expanded limestone screening area for flexible seating arrangements and event staging;
- + Use of steel and commercial grade materials;
- + Gable roof, appropriate detailing and colour relating to the architecture of surroundings;
- + Additional plantings to accent and buffer;
- + Permanent serving counter for events;
- + Portable toilet area to remain.



Jude Gaboury

Landscape Architect

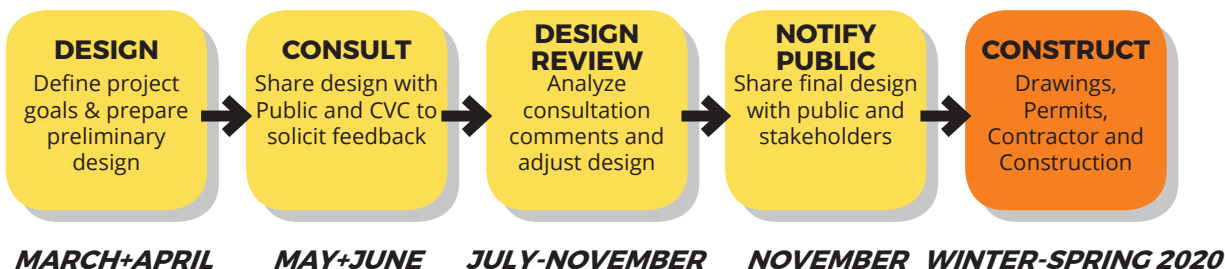
Recreation & Parks Department

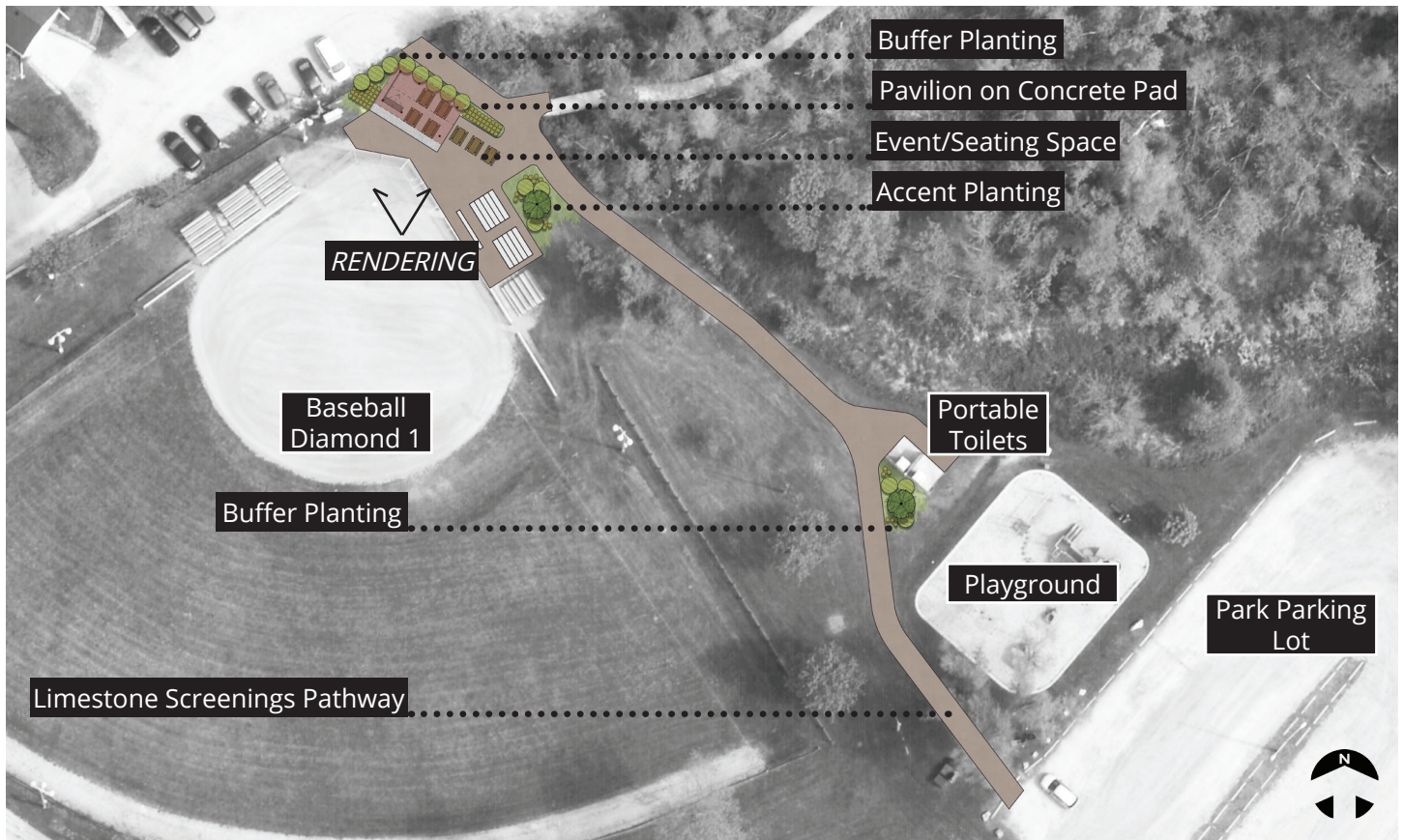
Tel: (905) 873-2601 ext. 2280

Email: jgaboury@haltonhills.ca



PROJECT TIMELINE *UPDATED*





PLAN

RENDERING

